

**Gemini**  
**20' x 20' Truss System**  
**UV Printed**

**TEMPLATE IS @ 1/2 SCALE**

Panels GE1-A, GE3-A, GE5-A, GE7-A,  
GE1-B, GE3-B, GE5-B, GE7-B:  
Total Graphic Area: 40.5" w x 38.75" h  
Finished Size: 39.5" w x 37.75" h  
Visual Size: 37.5" w X 35.75" h

Panel GE1-C and GE-D:

Total Graphic Area: 94.75" w x 38.75" h  
Finished Size: 93.75" w x 37.75" h

Panels GE2-A, GE4-A, GE6-A, GE8-A, GE2-B,  
GE4-B, GE6-B, GE8-B:  
Total Graphic Area: 40.5" w x 84.75" h  
Finished Size: 39.5" w x 83.75" h  
Visual Size: 37.5" w X 81.75" h

Template requires 1/4" bleed around the  
perimeter (1/2" around the perimeter when  
scaled to 200% and printed)

FS = Graphic is front side mounted  
(3/4" w magnet is applied to the back  
of the panel)

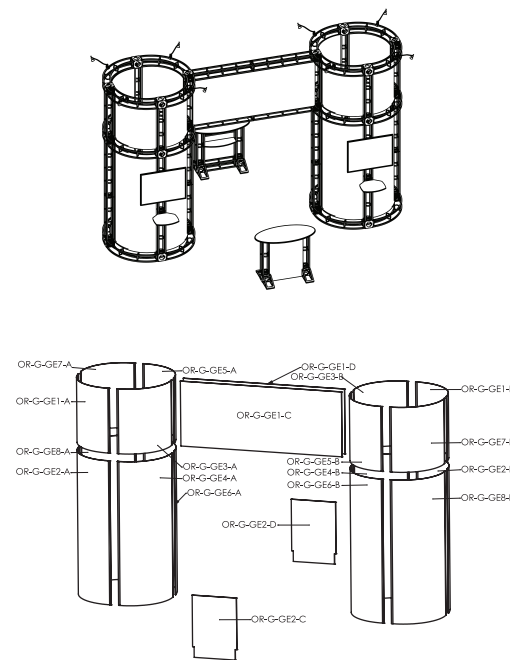
BS = Graphic is back side mounted  
(3/4" w velcro is applied to the front  
of the panel)

Notching = 7/8" square that is cut into the  
appropriate location.

Hinging= 3/4" strip of material that is cropped  
from the panel and reapplied with hinge tape.  
Allows two graphics to share the same  
extrusion corner.

**General Art Guidelines:**

- CMYK Color Mode
- All Solid Coated Pantone colors should  
be called out in the art as spot colors
- Embed all images and support files
- Resolution must be 200-240 ppi @  
1/2 size, 100-120ppi @ 100% size
- All fonts must be created to outlines
- Do not scale artboard
- Background color/images must  
bleed to the edge of artboard
- Do not use spot colors from template  
in your artwork as they will not print



**BS**

**OR-G-GE1-A**

**BS**  
**OR-G-GE2-A**

— bleed area  
— trim line

**BS**

**OR-G-GE3-A**

**BS**

**OR-G-GE4-A**

**BS**

**OR-G-GE5-A**

**BS**

**OR-G-GE6-A**

**BS**

**OR-G-GE7-A**

**BS**  
**OR-G-GE8-A**

gray area will  
be obstructed  
once finished  
and mounted



**BS**

**OR-G-GE1-B**

**BS**

**OR-G-GE2-B**

**BS**

**OR-G-GE3-B**

**BS**

**OR-G-GE4-B**

**BS**

**OR-G-GE5-B**

**BS**

**OR-G-GE6-B**

**BS**

**OR-G-GE7-B**

**BS**  
**OR-G-GE8-B**

gray area will  
be obstructed  
once finished  
and mounted



**FS**

**OR-G-GE1-C**

panel is notched  $7/8''$   
in all corners

**FS**

**OR-G-GE1-D**

panel is notched  $7/8''$   
in all corners