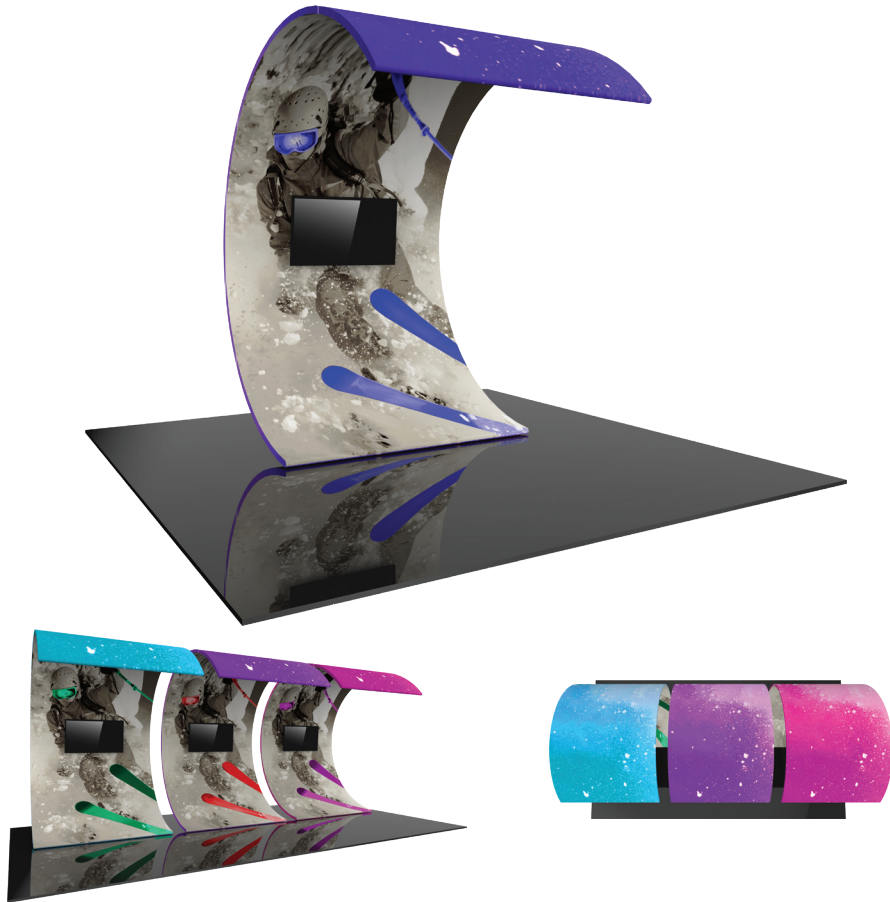


Formulate Surf Wall

SURF-WALL

Heavy-duty 50mm aluminum frames are coupled with stretch, zipper pillowcase fabric graphics to create flowing, uniquely-shaped Formulate® curved walls and architectural structures that are ideal for tradeshows, events, corporate environments and interior spaces. With a variety of options, you can mix and match with other Formulate fabric structures to create the ideal display, booth or environment.



features and benefits:

- Heavy-duty 50mm curved aluminum tube frames with support legs
- Organic C-shaped multimedia display
- One wall included. Easily add more surf walls for an even bigger impact!

- Kit includes: one frame, one dye-sublimated zipper pillowcase graphic, one large monitor mount*, and two storage cases
- Lifetime hardware warranty against manufacturer defects

dimensions:

Hardware

Graphic

Assembled unit:
92" w x 136.69" h x 120.94" d
2337mm(w) x 3472mm(h) x 3072mm(d)

Approximate weight:
121 lbs / 55 kg

Refer to related graphic template for more information.

Visit:
www.exhibitors-handbook.com/graphic-templates

Shipping

additional information:

Packing case(s):
1 OCH2
1 OCE-2

Shipping dimensions:

OCH2:
52" l x 29" h x 15" d
1321mm(l) x 737mm(h) x 381mm(d)

OCE-2: Expandable case length (l) may vary
40"-66" l x 18" h x 18" d
1016mm-1676mm(l) x 457mm(h) x 457mm(d)

Approximate total shipping weight:
172 lbs / 78 kg

Graphic material:
Dye-sublimation zipper pillowcase fabric

Monitor mount holds max weight:
80 lbs / 37 kg

Monitor mount holds VESA patterns:
200 x 200 up to 600 x 400mm

*monitor not included

When included in a larger kit, a different packaging solution will be listed to accommodate all contents of the kit. Individual packaging no longer provided.

2 person assembly recommended:



We are continually improving and modifying our product range and reserve the right to vary the specifications without prior notice. All dimensions and weights quoted are approximate and we accept no responsibility for variance. E&OE. See Graphic Templates for graphic bleed specifications.

Included In Your Kit

Tools, Components, & Connectors



RM-T1 x4



RM-T2-SP30-L x3



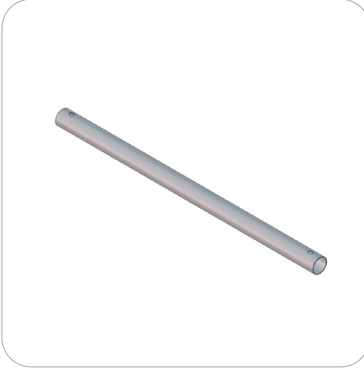
RM-T2-SP30-R x3



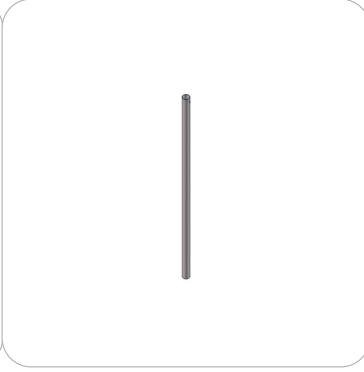
RM-T3 x6



SURF-WALL-T1 x1



SURF-WALL-T3 x2



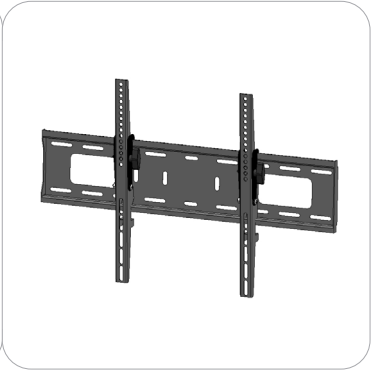
SURF-WALL-T4 x1



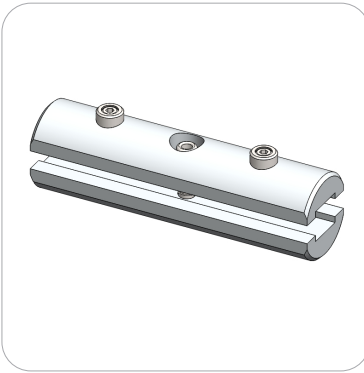
SURF-WALL-T2-L x1



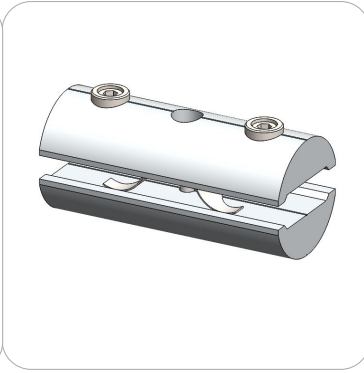
SURF-WALL-T2-R x1



EXT-LG-MB x1

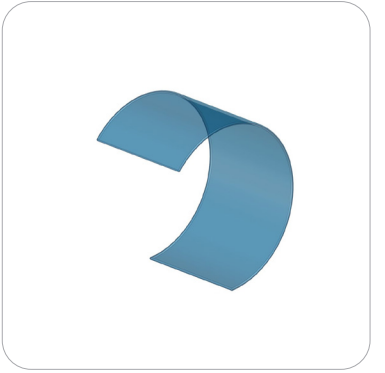


ES-30 x9



ES-50 x19

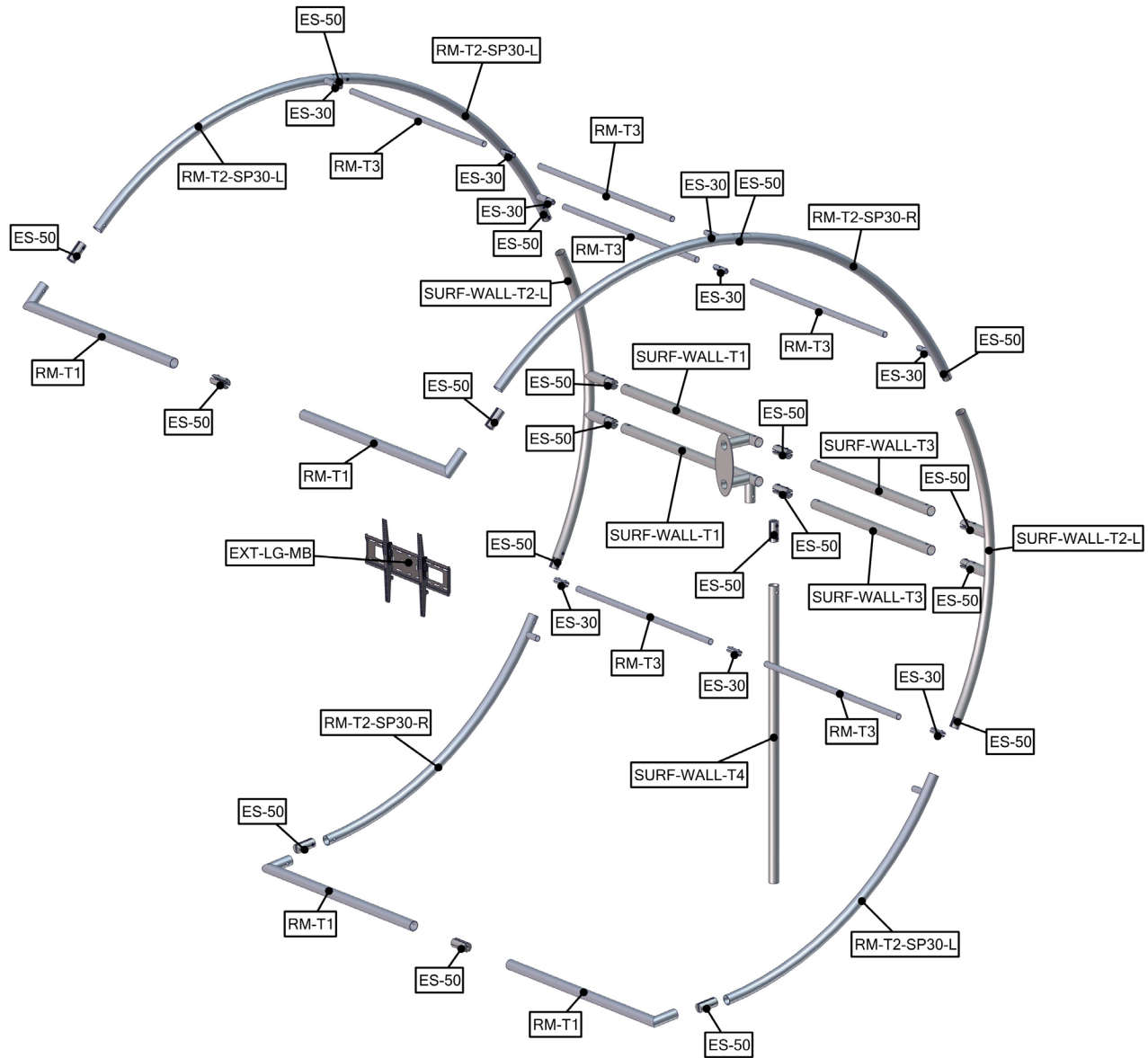
Graphics



TREE-G x1

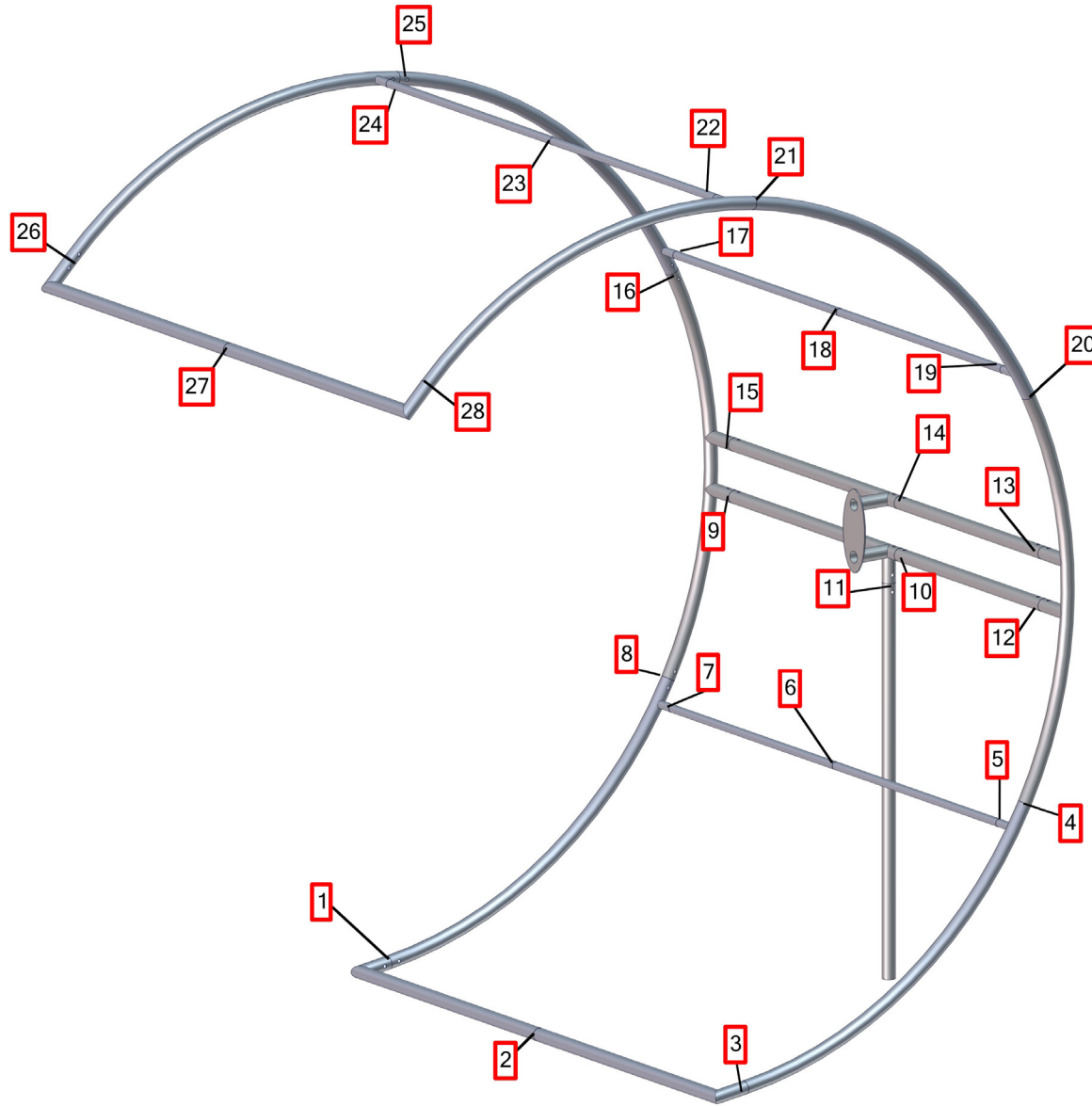
Exploded View

SURF-WALL



Labeling Diagram

SURF-WALL



Kit Assembly

Step by Step

Step 1.

Gather the components to build the bottom of the frame. Use the Exploded View and Labeling Diaphragm for part labels.

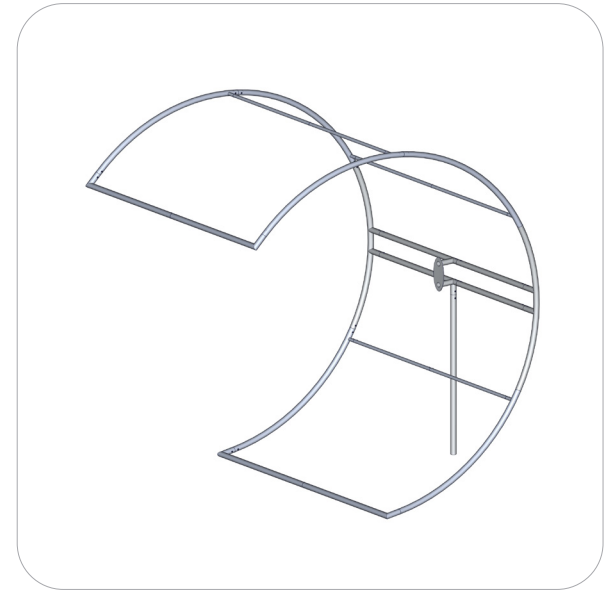
Reference Connection Method 1 for more details.



Step 2.

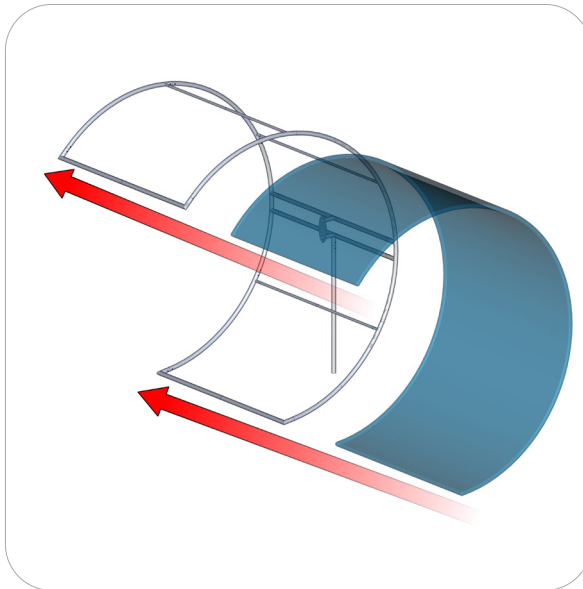
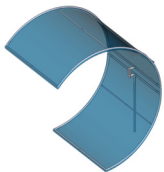
Build the top of the frame using the rest of the required tubes and then connect the top half of the frame to the bottom half.

Reference Connection Method 1 for more details.



Step 3.

Pull the graphic over the frame and zip it shut.

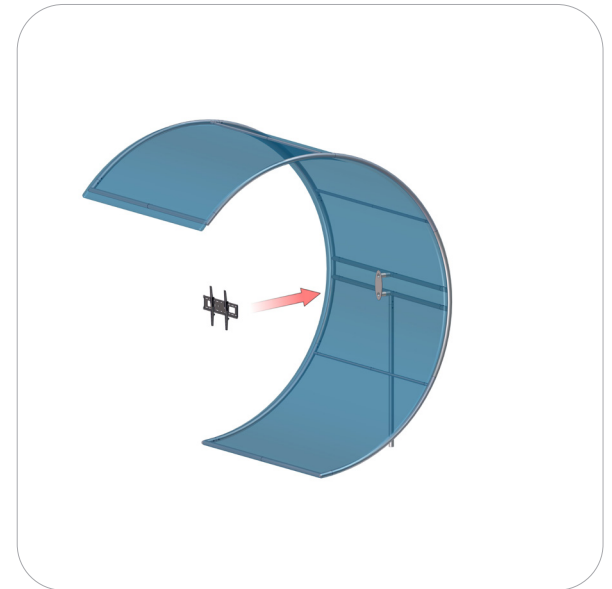
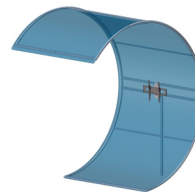


Step 4.

Install the monitor mount on the frame.

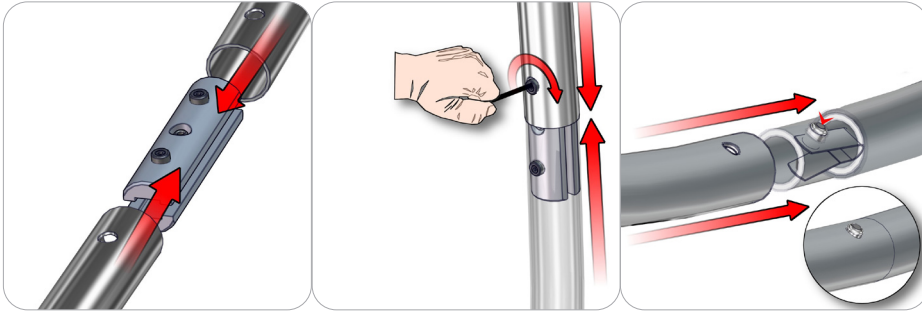
Reference the Monitor Mount supplement sheets for more details.

Setup is complete.



Connection Methods

Connection Method 1: ES30 / ES50



For spigot connections, compress the unlocked connector and slide into the tube lock access hole. Lock both screws carefully using your allen key tool. Be sure to lock securely, but do not over tighten. For snap button connections, locate the snap button on the connector or swage tube. Locate the hole on the corresponding tube. Press the snap button with your thumb and slide the tube and connector together so that the snap button snaps fully into the lock hole. To disassemble, press the snap button and pull apart.
